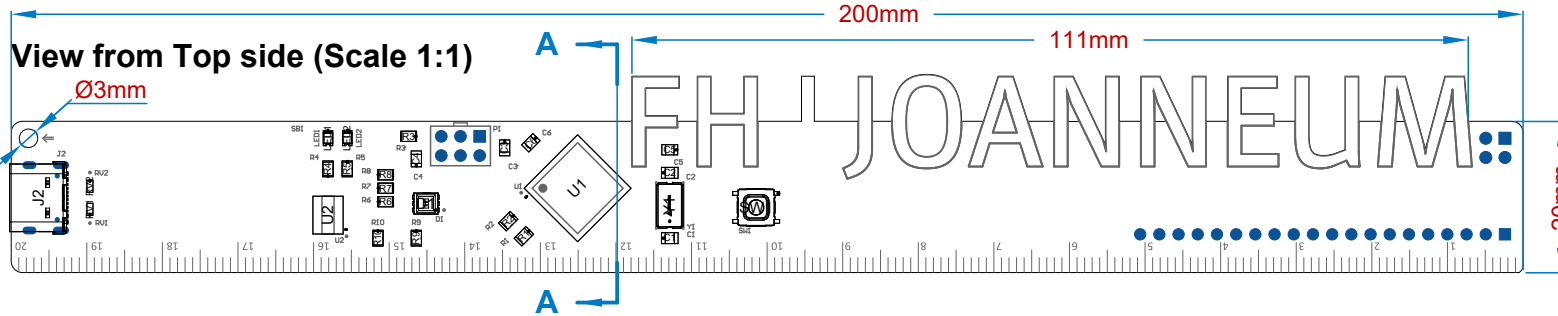
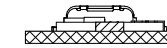


eeRuler V2.0

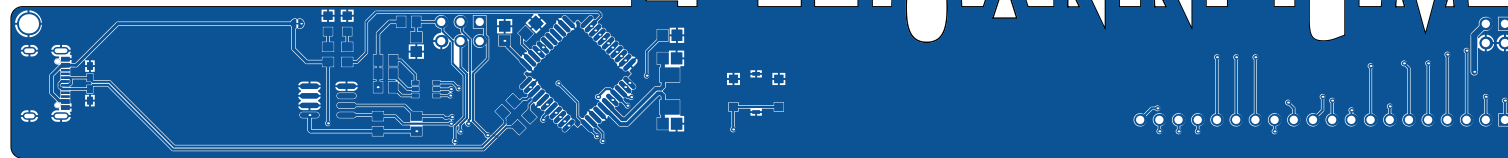
Design Document with Bill of Materials



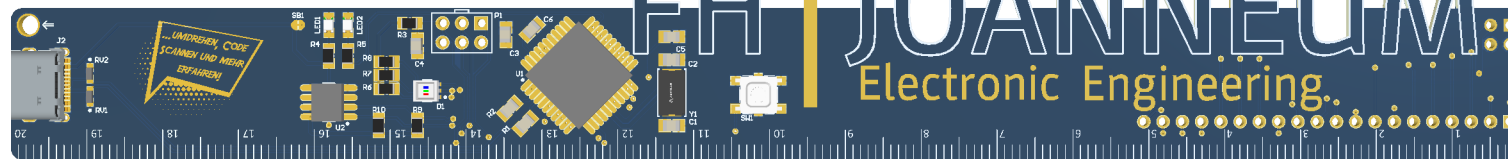
SECTION A-A (Scale 1:1)



Top Layer (Scale 1:1)



Realistic View



Size A4	Rev V2.0	Sheet 1 of 2	
Drawn by A. Läßler		Check by A. Läßler	
FH JOANNEUM University of Applied Sciences		eeRulerV02 Arduino-based PCB ruler for developing and microcontroller testing.	
Date changed 12/15/2022			

Layer Stack Legend

Material	Layer	Thickness	Dielectric Material	Type	Gerber
	Top Overlay			Legend	GTO
Surface Material	Top Solder	0.010mm	Solder Resist	Solder Mask	GTS
Copper	Top Layer	0.036mm		Signal	GTL
		1.524mm	FR-4	Dielectric	
Copper	Bottom Layer	0.036mm		Signal	GBL
Surface Material	Bottom Solder	0.010mm	Solder Resist	Solder Mask	GBS
	Bottom Overlay			Legend	GBO

Total thickness: 1.615mm

Bill Of Materials

Line #	Designator	Comment	Quantity	Description
1	C1, C2	08051A180JAT2A	2	
2	C3, C5	GRM21BR71C225KA12L	2	
3	C4, C6	GRM21BR71H104KA01L	2	Chip Capacitor, 0.1 uF, +/- 10%, 50 V, -55 to 125 degC, 0805 (2012 Metric), RoHS, Tape and Reel
4	D1	150352M173300	1	LED RGB CLEAR 6PLCC SMD
6	J2	629722000214	1	WR-USB 2.0 Type C, Receptacle, Horizontal, SMT
7	LED1	150080BS75000	1	SMD mono-color Chip LED, WL-SMCW, Blue
8	LED2	150080RS75000	1	SMD mono-color Chip LED, WL-SMCW, Red
9	P1	61300621121	1	THT Vertical Pin Header WR-PHD, Pitch 2.54 mm, Dual Row, 6 pins
11	R1, R2	CRCW080522R0JNEA	2	
12	R3, R9, R10	RC0805FR-0710KL	3	Chip Resistor, 10 KOhm, +/- 1%, 0.125 W, -55 to 155 degC, 0805 (2012 Metric), RoHS, Tape and Reel
13	R4, R5, R6, R7, R8	RC0805FR-071KL	5	Chip Resistor, 1 KOhm, +/- 1%, 125 mW, -55 to 155 degC, 0805 (2012 Metric), RoHS, Tape and Reel
14	RV1, RV2	CG0603MLC-05E	2	ESD Protector, 5 V Supply, -40 to 85 degC, 1.6 x 0.8 x 0.55 mm SMD, RoHS, Tape and Reel
15	SW1	431151015826	1	WS-TASV SMD Tact Switch 5X5 mm with ground terminal
16	U1	ATmega32U4-AU	1	8-bit AVR Microcontroller, 2.7-5.5V, 16MHz, 32KB Flash, 1KB EEPROM, 2.5KB SRAM, USB Controller, 44-pin TQFP, Industrial Grade (-40°C to 85°C), Ext Osc
17	U2	LM75CIMX-5	1	Digital Temperature Sensor and Thermal Watchdog with Two-Wire Interface, 8 pin SOIC NARROW
18	Y1	ABM7-16.000MHZ-D2Y-T	1	Crystal 16MHz ±20ppm 18pF SMD-2 6mm x 3.5mm

SizeA4	Rev V2.0	Sheet 2 of 2	
Drawn by A. Läßer		Check by A. Läßer	
FH JOANNEUM University of Applied Sciences		eeRulerV02 Arduino-based PCB ruler for developing and microcontroller testing.	
Date changed 12/15/2022			